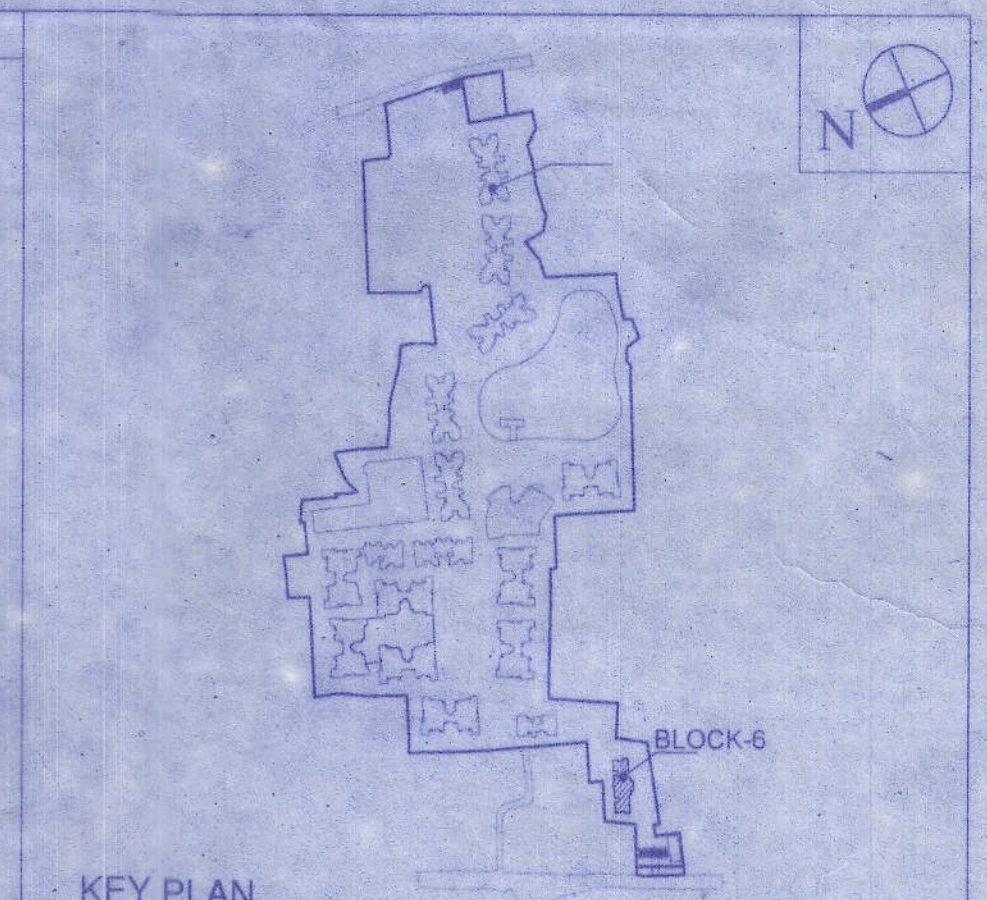


Name of the Land Owning Companies

1. Adharsa Dealers Private Limited.
2. Adharsa Tie Up Private Limited.
3. Anjanidham Marketing Private Limited.
4. Anjanidham Mercantile Private Limited.
5. Aravali Complex Private Limited.
6. Asthija Housing Private Limited.
7. Average Enclave Private Limited.
8. Average Heights Private Limited.
9. Average Properties Private Limited.
10. Average Residency Private Limited.
11. Bagmati Builders Private Limited.
12. Bagmati Shoppers Private Limited.
13. Banglumi Shoppers Private Limited.
14. Blockdeal Hirsa Private Limited.
15. Blockdeal Infracon Private Limited.
16. Blockdeal Nirman Private Limited.
17. Blockdeal Residency Private Limited.
18. Booster Residency Private Limited.
19. Circular Promoters Private Limited.
20. Coohut Buldoon Private Limited.
21. Coohut Builders Private Limited.
22. Coohut Complex Private Limited.
23. Coohut Enclave Private Limited.
24. Coohut Hirsa Private Limited.
25. Coohut Housing Private Limited.
26. Coohut Infracon Private Limited.
27. Coohut Infrastructure Private Limited.
28. Coohut Nirman Private Limited.
29. Coohut Projects Private Limited.
30. Coohut Promoters Private Limited.
31. Coohut Properties Private Limited.
32. Coohut Realty Private Limited.
33. Coohut Residency Private Limited.
34. Crossway Enclave Private Limited.
35. Crossway Complex Private Limited.
36. Crossway Infracon Private Limited.
37. Crossway Realstate Private Limited.
38. Dayasindhu Vinimay Private Limited.
39. Devpujan Complex Private Limited.
40. Devpujan Enclave Private Limited.
41. Devpujan Hirsa Private Limited.
42. Devpujan Infracon Private Limited.
43. Devpujan Residency Private Limited.
44. Dhansik Commercial Private Limited.
45. Dhansik Tradelink Private Limited.
46. Dhansik Complex Private Limited.
47. Dhansik Developers Private Limited.
48. Dhansik Heights Private Limited.
49. Dhansik Housing Private Limited.
50. Dhansik Infracon Private Limited.
51. Dhansik Nirman Private Limited.
52. Dhansik Project Private Limited.
53. Dhansubh Dealer Private Limited.
54. Fastener Realstate Private Limited.
55. Fastner Complex Private Limited.
56. Fastner Heights Private Limited.
57. Gindhan Commercial Private Limited.
58. Gopful Realstate Private Limited.
59. Highpower Heights Private Limited.
60. Highpower Infracon Private Limited.
61. Hopeful Enclave Private Limited.
62. Hopeful Heights Private Limited.
63. Hopeful Infracon Private Limited.
64. Hopeful Nirman Private Limited.
65. Hopeful Projects Private Limited.
66. Hopeful Promoters Private Limited.
67. Hopeful Realstate Private Limited.
68. Hopeful Residency Private Limited.
69. Jalashiv Residency Private Limited.
70. Kalasidhi Exports Private Limited.
71. Kaling Infracon Private Limited.
72. Lifelink Enclave Private Limited.
73. Lifelink Mercantile Private Limited.
74. Linkrose Dealer Private Limited.
75. Linkrose Distributors Private Limited.
76. Mangaldham Complex Private Limited.
77. Mangaldham Constructions Private Limited.
78. Mangaldham Developers Private Limited.
79. Mangaldham Enclave Private Limited.
80. Mangaldham Heights Private Limited.
81. Mangaldham Housing Private Limited.
82. Mangaldham Infracon Private Limited.
83. Mangaldham Nirman Private Limited.
84. Mangaldham Retailers Private Limited.
85. Mangaldham Shoppers Private Limited.
86. Mastery Complex Private Limited.
87. Mastery Enclave Private Limited.
88. Mastery Housing Private Limited.
89. Mastery Nirman Private Limited.
90. Mastery Realstate Private Limited.
91. Megapix Residency Private Limited.
92. Moonlife Vyapar Private Limited.
93. Moonlike Dealer Private Limited.
94. Moonlike Distributors Private Limited.
95. Mridul Complex Private Limited.
96. Mridul Enclave Private Limited.
97. Mridul Heights Private Limited.
98. Palanhar Vyapar Private Limited.
99. Panchmahal Vinimay Private Limited.
100. Panchmurti Complex Private Limited.
101. Panchmurti Constructions Private Limited.
102. Panchmurti Hirsa Private Limited.
103. Panchmurti Infracon Private Limited.
104. Panchmurti Promoters Private Limited.
105. Panchraton Complex Private Limited.
106. Panchraton Infracon Private Limited.
107. Panchraton Nirman Private Limited.
108. Panchraton Projects Private Limited.
109. Panchraton Realstate Private Limited.
110. Panchraton Residency Private Limited.
111. Paramount Trexim Private Limited.
112. Paraplita Business Private Limited.
113. Pawansathi Buldoon Private Limited.
114. Pawansathi Builders Private Limited.
115. Pawansathi Enclave Private Limited.
116. Pawansathi Hirsa Private Limited.
117. Pawansathi Infracon Private Limited.
118. Pawansathi Enclave Private Limited.
119. Pawansathi Gaha Nirman Private Limited.
120. Pawansathi Hirsa Private Limited.
121. Pawansathi Housing Private Limited.
122. Puro Residency Private Limited.
123. Puro Residency Private Limited.
124. Power Point Buldoon Private Limited.
125. Power Point Dealers Private Limited.
126. Power Point Realty Private Limited.
127. Power Point Tie Up Private Limited.
128. Power Point Tracom Private Limited.
129. Prathamujay Vyapar Private Limited.
130. Primary Enclave Private Limited.
131. Primary Heights Private Limited.
132. Pushadham Marketing Private Limited.
133. Rangrang Tradere Private Limited.
134. Ratansidhi Commerce Private Limited.
135. Rosefield Mercantile Private Limited.
136. Resara Vyapar Private Limited.
137. Rudramukhi Complex Private Limited.
138. Rudramukhi Constructions Private Limited.
139. Rudramukhi Promoters Private Limited.
140. Rudramukhi Promoters Private Limited.
141. Rudramukhi Residency Private Limited.
142. Shivbhakti Constructions Private Limited.
143. Shivmahima Vyapar Private Limited.
144. Shivpawan Complex Private Limited.
145. Shivpawan Developers Private Limited.
146. Shivpawan Heights Private Limited.
147. Shivpawan Housing Private Limited.
148. Shivpawan Infracon Private Limited.
149. Shivpawan Nirman Private Limited.
150. Shivpawan Properties Private Limited.
151. Shivpawan Realstate Private Limited.
152. Shivpawan Tradelink Private Limited.
153. Shivpawan Constructions Private Limited.
154. Shivphal Mercantile Private Limited.
155. Shivphal Vyapar Private Limited.
156. Shivvati Enclave Private Limited.
157. Shivvati Nirman Private Limited.
158. Shivvati Projects Private Limited.
159. Shivvati Promoters Private Limited.
160. Shivvati Realty Private Limited.
161. Shivvati Residency Private Limited.
162. Sidhima Vyapar Private Limited.
163. Snowrise Tradelink Private Limited.
164. Sun View Infracon Private Limited.
165. Tradelink Commercial Private Limited.
166. Tradelink Tradelink Private Limited.
167. Transways Complex Private Limited.
168. Transways Heights Private Limited.
169. Transways Infracon Private Limited.
170. Transways Projects Private Limited.
171. Tropex Vaniya Private Limited.
172. Vostro Complex Private Limited.
173. Wonder Vyapar Private Limited.
174. Devpujan Realstate Private Limited.
175. Hopeful Complex Private Limited.
176. Hopeful Housing Private Limited.
177. Megapix Complex Private Limited.
178. Moonlike Complex Private Limited.
179. Mridul Complex Private Limited.
180. Mridul Enclave Private Limited.
181. Mridul Heights Private Limited.
182. Mridul Infracon Private Limited.
183. Mridul Realty Private Limited.
184. Mridul Residency Private Limited.
185. Mridul Tradelink Private Limited.
186. Mridul Tradelink Private Limited.
187. Mridul Tradelink Private Limited.
188. Mridul Tradelink Private Limited.
189. Mridul Tradelink Private Limited.
190. Mridul Tradelink Private Limited.
191. Mridul Tradelink Private Limited.
192. Mridul Tradelink Private Limited.
193. Mridul Tradelink Private Limited.
194. Mridul Tradelink Private Limited.
195. Mridul Tradelink Private Limited.
196. Mridul Tradelink Private Limited.
197. Mridul Tradelink Private Limited.
198. Mridul Tradelink Private Limited.
199. Mridul Tradelink Private Limited.
200. Mridul Tradelink Private Limited.



KEY PLAN

SCHEDULE OF DOORS & WINDOWS

NO.	SILL	LINTEL	SIZE
D	2150	2150	1800X2150
D1	2150	2150	1100X2150
D1A	2150	2150	1100X2150
D2	2150	2150	1000X2150
D2B	250	2250	1000X2150
D3	2150	2150	900X2150
D4	2150	2150	750X2150
D5	2150	2150	1000X2150
D6	2150	2150	1500X2150
D7	2150	2150	1200X2150
F.C.D.	2150	2150	1150X2150
F.C.D.1	2250	2150	1150X2250
SD	2150	2150	2400X2150
SD1	2150	2150	2000X2150
SD2	2150	2150	1800X2150
SD3	2150	2150	1500X2150
SD4	2150	2150	1200X2150
W1	350	2150	1800X1800
W2	350	2150	850X1800
W2A	350	2150	1150X1800
W3	1100	2150	900X1500
W3A	850	2150	800X1500
W4	1250	2150	600X900
W5	350	2150	1100X1800
W6A	850	2150	1350X1800
W6B	350	2150	1200X1500
W7	950	2150	600X1200
W8	350	2150	1600X1800
W8A	750	2150	1500X1400
W9	350	2150	1400X1800
W10	350	2150	1000X1800
W11	750	2150	2500X1400
W12	750	2150	2100X1400
W13	750	2150	1000X400
W14	350	2150	1200X1800

CERTIFICATE OF STRUCTURAL STABILITY

WE HEREBY CERTIFY THAT THE FOUNDATION AND SUPERSTRUCTURE OF THE BUILDING PROPOSED FOR CONSTRUCTION ON MOUZA- PATULIA, DAG NOS. - 696 (P), 697, 698, 699, 700, 737 (P), 743, 744 (P), 749, 750, 754, 755, 756, 757, 758, 759, 760, 761, 762, 766 (P), 768, 769, 770, 771, 772, 773, 774, 776, 777, 844 (P), 845 (P), 846, 847 (P), 849, 850, 851, 853, 854, 855, 856, 857, 858, 767/1687, 770/1251, 770/1252, 771/1253, 771/1254 & 856/1260, CORRESPONDING L.R. DAG NOS. - 1595 (P), 1596, 1597, 1599, 1598, 1599, 1661 (P), 1702, 1635 (P), 1704, 1703, 1705, 1706, 1707, 1708, 1715, 1709, 1588, 1589, 1591, 1594, 1595 (P), 1587, 1596, 1712, 1710, 1713, 1717, 1716, 1825, 1824, 1736 (P), 1734 (P), 1733, 1732 (P), 1718, 1719, 1724, 1722, 1723, 1857, 1735, 1555, 1554, 1583, 1720, 1711, 1714, 1726 & 1556 RESPECTIVELY. J.L.NO. - 4, UNDER PATULIA GRAM PANCHAYET, P. S. - KHARDAH, DISTRICT - NORTH 24-PARGANAS, HAVE BEEN SO DESIGNED BY US WILL MAKE SUCH FOUNDATION AND SUPERSTRUCTURE SAFE IN ALL RESPECTS INCLUDING THE CONSIDERATION OF BEARING CAPACITY & SETTLEMENT OF SOIL ETC.

SIGNATURE OF ARCHITECT

JAY PRAKASH BHARAT KUMAR AGRAWAL
B. Arch., A.I.I.A.
Reg. No. CA/88/10098
ARCHITECT SL. NO. - 32(A)

SIGNATURE OF ARCHITECT

SANJAY KUMAR DUBEY
B. Arch., A.I.I.A.
Reg. No. CA/88/10098
ARCHITECT SL. NO. - 32(A)

SIGNATURE OF ARCHITECT

JAY PRAKASH BHARAT KUMAR AGRAWAL
B. Arch., A.I.I.A.
Reg. No. CA/88/10098
ARCHITECT SL. NO. - 32(A)

SIGNATURE OF STRUCTURAL ENGG.

SIGNATURE OF GEO-TECH. ENGG.

THE PLAN HAVE BEEN PLANNED & DESIGNED IN COMPLIANCE OF THE WEST BENGAL MUNICIPAL BUILDING RULES 2007 FOLLOWED BY KHARDAH MUNICIPALITY, THE NEAREST MUNICIPALITY, ALL NORMS REGARDING BUILDING SAFETY INCLUDING STRUCTURAL STABILITY & FIRE SAFETY SHALL BE AS PER NBC.

SIGNATURE OF ARCHITECT

SIGNATURE OF STRUCTURAL ENGG.

CERTIFICATE OF LAND

I HAVE PERSONALLY VERIFIED THE SITE & FOUND IT IS BUILDABLE & TO MY KNOWLEDGE IT IS NOT A TANK OR FILLED UP TANK.

SIGNATURE OF ARCHITECT

JAY PRAKASH BHARAT KUMAR AGRAWAL
B. Arch., A.I.I.A.
Reg. No. CA/88/10098
ARCHITECT SL. NO. - 32(A)

TITLE -
GROUND FLOOR PLAN, 1ST. FLOOR PLAN, TYP. FLOOR PLAN (2ND. TO 12TH.), ROOF PLAN, PART PLAN OF O.H.W.R.-1 & 2 (BLOCK - 6)

PROJECT -
PROPOSED ADDITION OF 4 NOS. RESIDENTIAL BLOCKS (2 NOS. (G-XII) STORIED NAMED - 5 & 6 AND 2 NOS. (G-XIII) STORIED NAMED - 3B & 3C) AND 1 NO. (G-III) STORIED COMMERCIAL BLOCK WITH REVISED OF 7 NOS. BLOCKS (6 NOS. (G-XIII) STORIED NAMED - 1E, 1F, 1G, 4A, 4B, 4C AND 1 NO. (B+G-VI) STORIED NAMED - 3A) AND 8 NOS. SANCTIONED BLOCKS (7 NOS. (G-XIV) STORIED NAMED - 1A, 1B, 1C, 1D, 2A, 2B AND 1 NO. (G-III) STORIED NAMED - 2C) UNDER CONSTRUCTION WITH REFERENCE TO THE APPROVAL FOR CONSTRUCTION VIDE PERMISSION NO. - 322/BK-IP/S DATED 11/08/18 AND OUT OF 8 NOS. SANCTIONED BLOCKS - 4 NOS. BLOCKS NAMED - 1B, 1C, 1D & 2A) HAS BEEN OBTAINED OCCUPANCY CERTIFICATE ON 05.04.2019 FROM BK-II PANCHAYAT SAMITI, NORTH 24 PARGANAS IN RESIDENTIAL COMPLEX AT MOUZA - PATULIA, R.S. DAG NOS. - 696 (P), 697, 698, 699, 700, 737 (P), 743, 744 (P), 749, 750, 754, 755, 756, 757, 758, 759, 760, 761, 762, 766 (P), 768, 769, 770, 771, 772, 773, 774, 776, 777, 844 (P), 845 (P), 846, 847 (P), 849, 850, 851, 853, 854, 855, 856, 857, 858, 767/1687, 770/1251, 770/1252, 771/1253, 771/1254 & 856/1260, CORRESPONDING L.R. DAG NOS. - 1595 (P), 1596, 1597, 1598, 1599, 1661 (P), 1702, 1635 (P), 1704, 1703, 1705, 1706, 1707, 1708, 1715, 1709, 1588, 1589, 1591, 1594, 1595 (P), 1587, 1596, 1712, 1710, 1713, 1717, 1718, 1825, 1824, 1736 (P), 1734 (P), 1733, 1732 (P), 1718, 1724, 1727, 1723, 1557, 1735, 1555, 1554, 1583, 1720, 1711, 1714, 1726 & 1556 RESPECTIVELY. J.L. NO. - 4, UNDER PATULIA GRAM PANCHAYET, P. S. - KHARDAH, DIST. - NORTH 24-PARGANAS.

The structural analysis reports & soil reports are kept for reference in this office. The clearance is accorded subject to certificate of architect & Engineer Geo-Tech Engineer.

ARCHITECTS
AGRAWAL & AGRAWAL
BARODA & KOLKATA

SCALE 1:100 DATE 15.07.19 DEALT URMIMALANAMITA CHECKED SUPRIYA

Authorized Signatory

Executive Officer
Baranakhali Panchayet Samity